



INDOFINE Chemical Company, Inc.

121 Stryker Lane, Bldg. 30, Suite 1 • Hillsborough, NJ 08844 • U.S.A.

Phone: (908) 359-6778 • FAX: (908) 359-1179

website: www.indofinechemical.com

e-mail: chemical@indofinechemical.com

CERTIFICATE OF ANALYSIS

Catalog Number: 06-387

Product Name: CHRYSOPHANOL-8-GLUCOSIDE

CAS Number: [13241-28-6]

Lot Number: 2409977

Chemical Formula: C₂₁H₂₀O₉

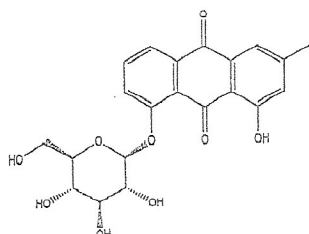
Molecular Weight: 416.38

Appearance: Orange-yellow powder

Water Content: 0.8%

Storage: Store in a cool, dry place

Purity(HPLC): 98.8%



Prepared by:
Ramesh Mandadi
Ramesh Mandadi
Director of Operations

Reviewed and Approved by:
Sujata Moton
Sujata Moton
VP



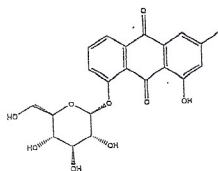
INDOFINE Chemical Company, Inc.

121 Stryker Lane, Bldg. 30, Suite 1 • Hillsborough, NJ 08844 • U.S.A.

Phone: (908) 359-6778 • FAX: (908) 359-1179

website: www.indofinechemical.com

e-mail: chemical@indofinechemical.com



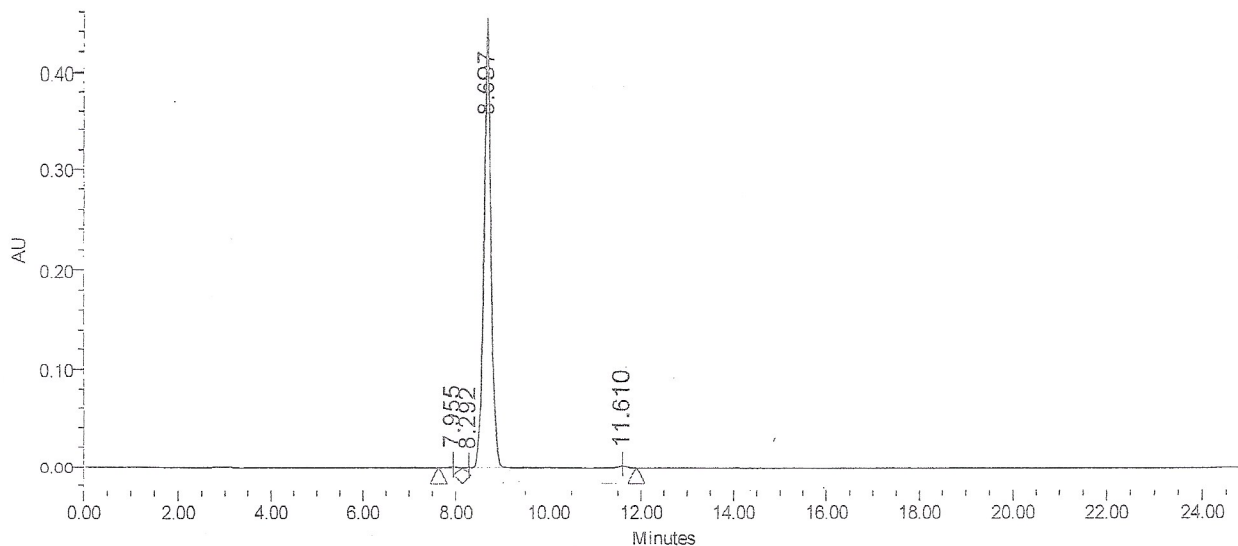
HPLC ANALYSIS

Catalog No.: 06-387
Product Name: Chrysophanol-8-glucoside
Lot No.: 2409977

SAMPLE INFORMATION

Sample Name:		Acquired By:	
Sample Type:	Unknown	Sample Set Name:	
Vial:	90	Acq. Method Set:	Chrysophanol-8-0-glucoopyranoside
Injection #:	1	Processing Method:	sample
Injection Volume:	8.00 ul	Channel Name:	PDA Ch1 258nm@4.8nm
Run Time:	25.0 Minutes	Proc. Chnl. Descr.:	PDA Ch1 258nm@4.8nm

Auto-Scaled Chromatogram



Peak Results

Name	RT	Area	% Area	Height (μV)	USP Plate Count	USP Resolution
1	7.955	18942	0.39	1959	16840.80	
2	8.292	3860	0.08	505		
3	8.697	4747181	98.84	441960	17148.54	
4	11.610	32887	0.68	2709	23623.60	9.81

Prepared by:
Ramesh Mandadi
Ramesh Mandadi
Director of Operations

Reviewed and Approved by:
Sujata Moton
Sujata Moton
VP